

# Delivering Time-Critical Shipments with Confidence

## The Challenge

When faced with the task of collecting 22 pallets, weighing a combined 1284kg, from Europe and ensuring their delivery to the Midlands by 1100hrs the following day, Freightline encountered a critical challenge. The stakes were high as any delay could have resulted in production line stoppage for our valued client. Aware of the severe financial implications and potential damage to customer relationships, the client turned to us, knowing our reputation for exceptional service and expertise in time-critical shipments.

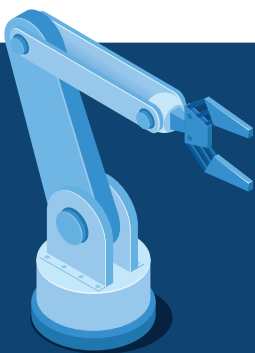
## Our Strategy

**With time as our most pressing factor, our experienced team swiftly developed a comprehensive solution to meet this urgent transportation requirement head-on.**

Recognising the critical nature and size of the delivery, we devised a strategy that left no room for error. Our unwavering confidence in our ability to deliver excellence led us to choose a dedicated air charter service as the optimal solution.

By doing so, we aimed to maximise efficiency and ensure the shortest possible timeframe for delivery.

We pride ourselves on exceeding expectations, and this challenge was no exception with precision and determination, we successfully completed the transportation of the 22 pallets delivering time critical shipment.



**AVG. STOPPAGE COST**  
**£3.5K**  
**PER MINUTE**



**Follow us**



**Search** Freightline Carriers

**Visit our website** [www.freightlinecarriers.co.uk](http://www.freightlinecarriers.co.uk)

## EXPERT INSIGHT

“The Freightline team recognises the significant costs and schedule impacts caused by production stoppages. With our expertise, we confidently navigate these challenges, providing effective solutions to minimise financial burdens and ensure smooth operations.”



## Our Impact

At Freightline, we pride ourselves on exceeding expectations, and this challenge was no exception. With precision and determination, we successfully completed the transportation of the 22 pallets, delivering the time-critical parts to Birmingham well ahead of schedule. Our relentless efforts ensured that the goods arrived at their destination with a full hour to spare before the production line deadline. Despite encountering customs issues as the plane was approaching the UK, our immediate reaction and effective communication with the client's agent allowed us to swiftly resolve the matter, ensuring minimal disruption to the delivery schedule.

To provide an end-to-end solution, we had already arranged for transport to be on standby at the airport, ready to efficiently forward the load to the client's final destination. This proactive approach demonstrated our commitment to providing the highest level of service and our understanding of the substantial costs and complexities associated with production line stoppages.

## Dedicated, real-time support from experts

In the automotive industry, flexibility and effectiveness are of paramount importance, which is why Freightline's logistics experts are available 24/7 to meet the needs of our clients.

**In addition to offering complete logistics solutions, we always find the most efficient way to deliver goods in the shortest possible time.**

Call us today on

**+44 (0) 1926 290 222**

Email [info@freightlinecarriers.co.uk](mailto:info@freightlinecarriers.co.uk)

“

At Freightline, we're here for you 24/7, Our team is dedicated to providing reliable and customise logistics solutions that meet your needs, ensuring uninterrupted operations for your business.



**Freightline**

Dedicated Logistics Specialists